

DAILY TECHNICAL REPORT

08 August 2017

EUR / USD



Bullish momentum is going to continue.

- EUR/USD bullish pressures are still on despite ongoing consolidation. Hourly resistance is given at 1.1910 (02/08/2017 high). Hourly support can be found at 1.1728 (04/08/2017 high). Stronger support lies at 1.1613 (26/07/2017 low). Expected to show continued bullish pressures.
- In the longer term, the momentum is now turning largely positive. We favour a continued bullish bias. Key resistance holding at 1.1871 (24/08/2015 high) has been broken while strong support lies at 1.0341 (03/01/2017 low).

Yann Quelell | Market Strategist
 e-mail: yann.quelell@swissquote.ch

GBP / USD



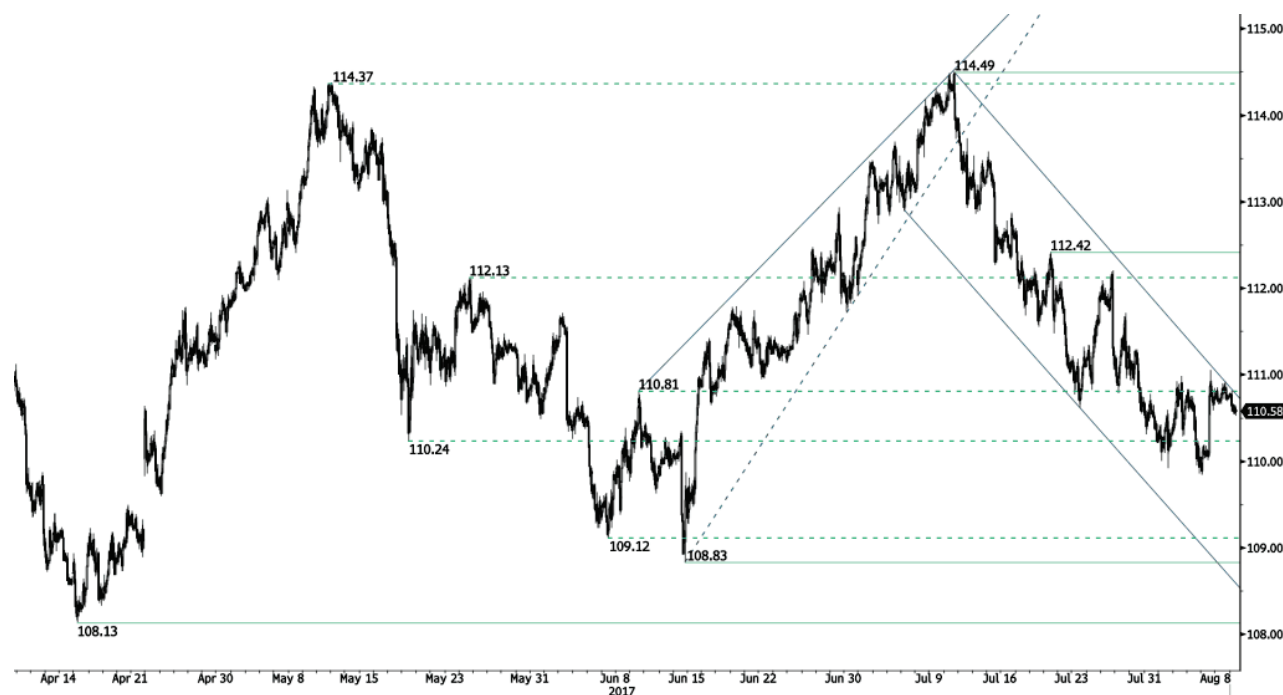
Bearish breakout.

- GBP/USD has broken bullish trend . Hourly resistance is given at 1.3267 (03/08/2017 high). Hourly support is given at 1.2933 (20/07/2017 low) while support can be found at 1.2933 (20/07/2017 low). Expected to show growing bearish pressures.

- The long-term technical pattern is even more negative since the Brexit vote has paved the way for further decline. Long-term support given at 1.0520 (01/03/85) represents a decent target. Long-term resistance is given at 1.5018 (24/06/2015) and would indicate a long-term reversal in the negative trend. Yet, it is very unlikely at the moment.

Yann Quelell | Market Strategist
 e-mail: yann.quelell@swissquote.ch

USD / JPY



Riding downtrend channel.

- USD/JPY's bearish momentum continues. Yet, the pair is monitoring resistance implied by the upper bound of the downtrend channel. Hourly support is given at 109.85 (04/08/2017 low). Stronger support is located at a distance at 108.83 (17/04/2017 low). Expected to show further downside pressures.
- We favor a long-term bearish bias. Support is now given at 96.57 (10/08/2013 low). A gradual rise towards the major resistance at 135.15 (01/02/2002 high) seems absolutely unlikely. Expected to decline further support at 93.79 (13/06/2013 low).

Yann Quelell | Market Strategist
 e-mail: yann.quelell@swissquote.ch

USD / CHF



Testing strong resistance.

- USD/CHF's bullish momentum continues. Hourly support can be found at 0.9631 (01/08/2017 low). Strong resistance is given at 0.9771 (15/06/2017 high) is on target. Expected to show further strengthening.
- In the long-term, the pair is still trading in range since 2011 despite some turmoil when the SNB unpegged the CHF. Key support can be found 0.8986 (30/01/2015 low). The technical structure favours nonetheless a long term bullish bias since the unpeg in January 2015.

Yann Quelell | Market Strategist
 e-mail: yann.quelell@swissquote.ch

USD / CAD



Short-term bullish momentum continues.

- USD/CAD's short-term bullish momentum continues. Hourly resistance is given at 1.2619 (03/08/2017) while support can be found at 1.2414 (27/07/2017 low). Expected to show continued consolidation above 1.2400.

- In the longer term, the pair has broken long-term support that can be found at 1.2461 (16/03/2015 low) before bouncing back. Strong resistance is given at 1.4690 (22/01/2016 high). The pair should head further lower.

Yann Quelell | Market Strategist
 e-mail: yann.quelell@swissquote.ch

AUD / USD

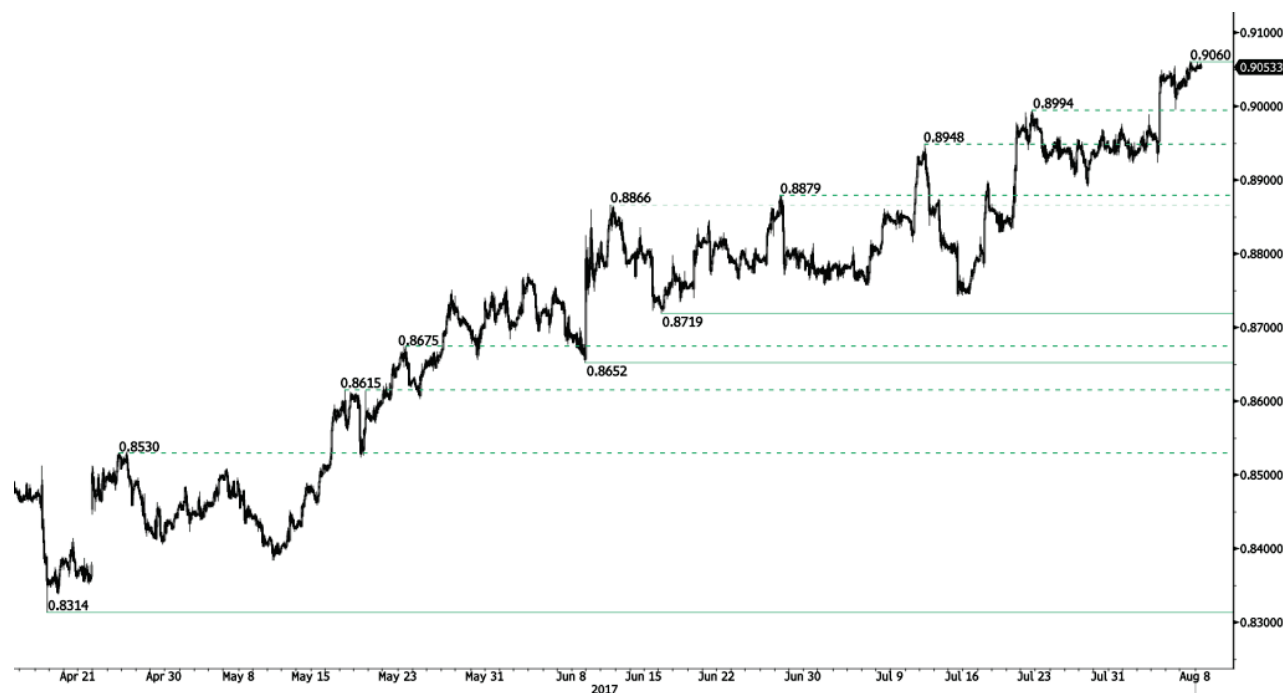


Growing selling pressures.

- AUD/USD's short-term technical structure is bearish. Hourly resistance is given at 0.8066 (27/07/2017 high) while hourly support can be found at 0.7875 (21/07/2017 low). Expected to show further consolidation.
- In the long-term, we are waiting for further signs that the current downtrend is ending. Key supports stand at 0.6009 (31/10/2008 low). A break of the key resistance at 0.8295 (15/01/2015 high) is needed to invalidate our long-term bearish view.

Yann Quelell | Market Strategist
 e-mail: yann.quelell@swissquote.ch

EUR / GBP



Bullish pressures persist.

- EUR/GBP is trading around its highest levels of the year. The pair keeps on pushing higher. Hourly resistance lies at 0.9054 (04/08/2017 high). Hourly support is given at a distance at 0.8742 (16/06/2017 low). Downside risks are nonetheless important.
- In the long-term, the pair has largely recovered from recent lows in 2015. The technical structure suggests a growing upside momentum. The pair is trading above from its 200 DMA. Strong resistance can be found at 0.9500 psychological level.

Yann Quelell | Market Strategist
 e-mail: yann.quelell@swissquote.ch

EUR / CHF



Ready for another leg higher.

- EUR/CHF has consolidated and short-term buying pressures are back. Hourly support is located at 1.1412 (04/08/2017 low). Expected to show another leg higher.
- In the longer term, the technical structure has reversed. Strong resistance at 1.1200 (04/02/2015 high) has been broken. Yet, the ECB's QE programme is likely to cause persistent selling pressures on the euro, which should weigh on EUR/CHF. Supports can be found at 1.0184 (28/01/2015 low) and 1.0082 (27/01/2015 low).

Yann Quelell | Market Strategist
 e-mail: yann.quelell@swissquote.ch

GOLD (in USD)



Consolidation phase.

- Gold is consolidating. Hourly support is given at 1254 (04/0782017 low). Strong support is given at 1204 (10/07/2017 high). Hourly resistance is given at 1274 (01/08/2017 high). Expected to see further consolidation.

- In the long-term, the technical structure suggests that there is a growing upside momentum. A break of 1392 (17/03/2014) is necessary to confirm it. A major support can be found at 1045 (05/02/2010 low)

Yann Quelell | Market Strategist
 e-mail: yann.quelell@swissquote.ch

SILVER (in USD)



Going lower.

- Silver's bullish pressures have faded after the commodity reached hourly resistance at 16.94 (02/08/2017 high). The commodity has broken hourly support at 16.25 (25/07/2017 low). Expected to continue pushing lower.
- In the long-term, the death cross indicates that further downsides are very likely. Resistance is located at 25.11 (28/08/2013 high). Strong support can be found at 11.75 (20/04/2009).

Yann Quelell | Market Strategist
 e-mail: yann.quelell@swissquote.ch

CRUDE OIL (in USD)



Strengthening.

- Crude oil is trading higher. Hourly support is given at 47.86 (26/07/2017 low). Strong resistance can be found at 50.41 (31/07/2017). Expected to monitor resistance at 50.41(31/07/2017 high).

- In the long-term, crude oil has recovered after its sharp decline last year. However, we consider that further weakness are very likely. Strong support lies at 35.24 (05/04/2016) while resistance can now be found at 55.24 (03/01/2017 high).

Yann Quelell | Market Strategist
 e-mail: yann.quelell@swissquote.ch

BITCOIN (in USD)



Very strong bullish momentum.

- Bitcoin keeps on surging. Hourly resistance is given at 3478 (08/08/2017 high) and hourly support lies very far at 2403 (26/07/2017 low). The road is wide open for another bullish move.
- In the long-term, the digital currency has had an exponential growth. There are decent likelihood that the asset will consolidate above \$1500. Long-term support is given at \$1464 (04/05/2017 low).

Yann Quelell | Market Strategist
 e-mail: yann.quelell@swissquote.ch

DISCLAIMER

While every effort has been made to ensure that the data quoted and used for the research behind this document is reliable, there is no guarantee that it is correct, and Swissquote Bank and its subsidiaries can accept no liability whatsoever in respect of any errors or omissions, or regarding the accuracy, completeness or reliability of the information contained herein. This document does not constitute a recommendation to sell and/or buy any financial products and is not to be considered as a solicitation and/or an offer to enter into any transaction. This document is a piece of economic research and is not intended to constitute investment advice, nor to solicit dealing in securities or in any other kind of investments.

Although every investment involves some degree of risk, the risk of loss trading off-exchange forex contracts can be substantial. Therefore if you are considering trading in this market, you should be aware of the risks associated with this product so you can make an informed decision prior to investing. The material presented here is not to be construed as trading advice or strategy. Swissquote Bank makes a strong effort to use reliable, expansive information, but we make no representation that it is accurate or complete. In addition, we have no obligation to notify you when opinions or data in this material change. Any prices stated in this report are for information purposes only and do not represent valuations for individual securities or other instruments.

This report is for distribution only under such circumstances as may be permitted by applicable law. Nothing in this report constitutes a representation that any investment strategy or recommendation contained herein is suitable or appropriate to a recipient's individual circumstances or otherwise constitutes a personal recommendation. It is published solely for information purposes, it does not constitute an advertisement and is not to be construed as a solicitation or an offer to buy or sell any securities or related financial instruments in any jurisdiction. No representation or warranty, either express or implied, is provided in relation to the accuracy, completeness or reliability of the information contained herein, except with respect to information concerning Swissquote Bank, its subsidiaries and affiliates, nor is it intended to be a complete statement or summary of the securities, markets or developments referred to in the report. Swissquote Bank does not undertake that investors will obtain profits, nor will it share with investors any investment profits nor accept any liability for any investment losses. Investments involve risks and investors should exercise prudence in making their investment decisions. The report should not be regarded by recipients as a substitute for the exercise of their own judgment. Any opinions expressed in this report are for information purpose only and are subject to change without notice and may differ or be contrary to opinions expressed by other business areas or groups of Swissquote Bank as a result of using different assumptions and criteria. Swissquote Bank shall not be bound or liable for any transaction, result, gain or loss, based on this report, in whole or in part.

Research will initiate, update and cease coverage solely at the discretion of Swissquote Bank Strategy Desk. The analysis contained herein is based on numerous assumptions. Different assumptions could result in materially different results. The analyst(s) responsible for the preparation of this report may interact with trading desk personnel, sales personnel and other constituencies for the purpose of gathering, synthesizing and interpreting market information. Swissquote Bank is under no obligation to update or keep current the information contained herein and not liable for any result, gain or loss, based on this information, in whole or in part.

Swissquote Bank specifically prohibits the redistribution of this material in whole or in part without the written permission of Swissquote Bank and Swissquote Bank accepts no liability whatsoever for the actions of third parties in this respect. © Swissquote Bank 2014. All rights reserved.