

DAILY TECHNICAL REPORT

05 January 2017

EUR / USD



Pushing towards 1.0600.

- EUR/USD has surged yesterday. The pair now lies above 1.0500. Hourly support lies at 1.0341 (03/01/2017 low). Stronger resistance is given at 1.0670 (14/12/2016 high). Expected to see continued sideways price action in the short-term.
- In the longer term, the death cross late October indicated a further bearish bias. The pair has broken key support given at 1.0458 (16/03/2015 low). Key resistance holds at 1.1714 (24/08/2015 high). Expected to head towards parity.

Yann Quelell | Market Strategist
 e-mail: yann.quelell@swissquote.ch

GBP / USD



Breaking downtrend channel.

- GBP/USD has exited downtrend channel. Hourly support lies at 1.2200 (03/01/2017 low) while resistance lies at 1.2388 (30/12/2016 high). The technical structure suggests further consolidation. Yet, a break of resistance area around 1.2400 is needed to confirm the end of the short-term bearish trend.
- The long-term technical pattern is even more negative since the Brexit vote has paved the way for further decline. Long-term support given at 1.0520 (01/03/85) represents a decent target. Long-term resistance is given at 1.5018 (24/06/2015) and would indicate a long-term reversal in the negative trend. Yet, it is very unlikely at the moment.

Yann Quelell | Market Strategist
e-mail: yann.quelell@swissquote.ch

USD / JPY



Bearish pressures.

- USD/JPY has weakened and is moving away from hourly resistance given at 118.66 (15/12/2016 high). Hourly support at 116.05 (30/12/2016 low) has been broken. Stronger support lies at 114.74 (12/12/2016 low). Expected to see further downside moves.
- We favor a long-term bearish bias. Support is now given at 96.57 (10/08/2013 low). A gradual rise towards the major resistance at 135.15 (01/02/2002 high) seems absolutely unlikely. Expected to decline further support at 93.79 (13/06/2013 low).

Yann Quelell | Market Strategist
e-mail: yann.quelell@swissquote.ch

USD / CHF

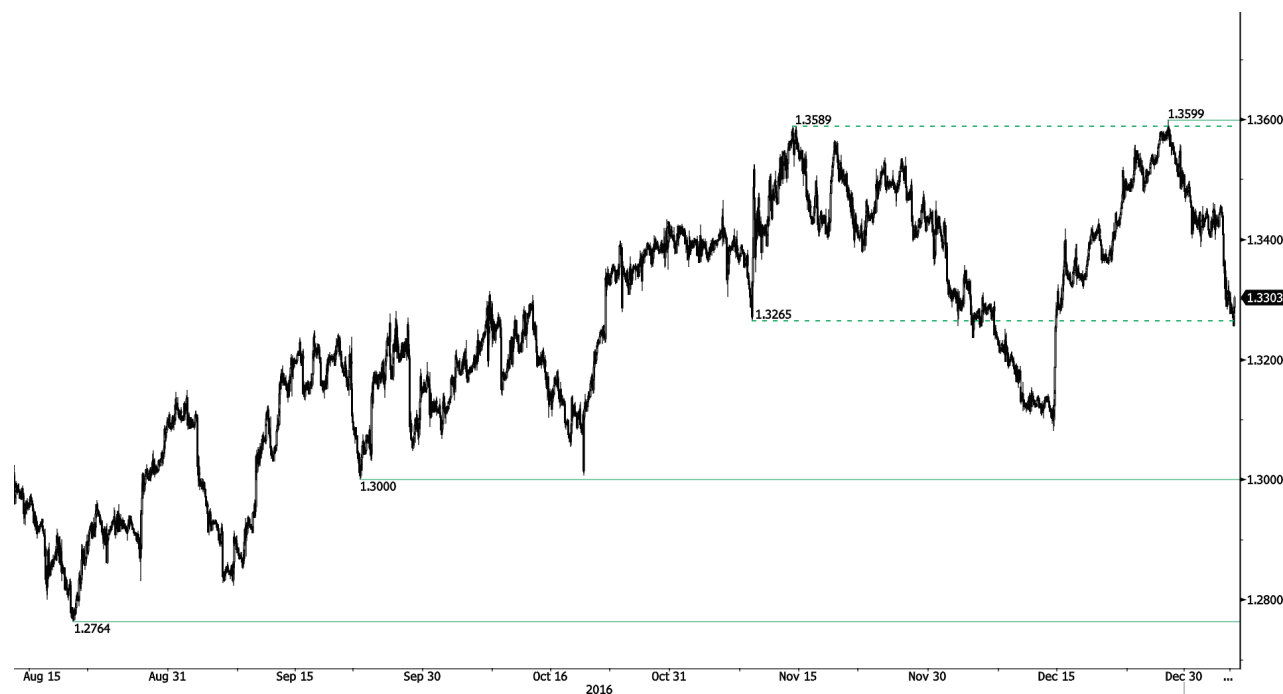


Moving sideways.

- USD/CHF is moving sideways. Hourly resistance is given at 1.0344 (15/12/2016 high). Key support is given at the parity. Expected to further consolidate above 1.0200.
- In the long-term, the pair is still trading in range since 2011 despite some turmoil when the SNB unpegged the CHF. Key support can be found 0.8986 (30/01/2015 low). The technical structure favours nonetheless a long term bullish bias since the unpeg in January 2015.

Yann Quelell | Market Strategist
e-mail: yann.quelell@swissquote.ch

USD / CAD



Continued decline.

- USD/CAD keeps on going lower. Key resistance seems far at 1.3599 (14/11/2016 high). Hourly support at 1.3274 (15/12/2016 low) has been broken but the pair failed to hold above it. Key support is given at 1.3006 (19/10/2016 low). Expected to go further lower.

- In the longer term, there is a golden cross with the 50 dma crossing the 200 dma indicating further upside pressures. Strong resistance is given at 1.4690 (22/01/2016 high). Long-term support can be found at 1.2461 (16/03/2015 low).

Yann Quelell | Market Strategist
e-mail: yann.quelell@swissquote.ch

AUD / USD

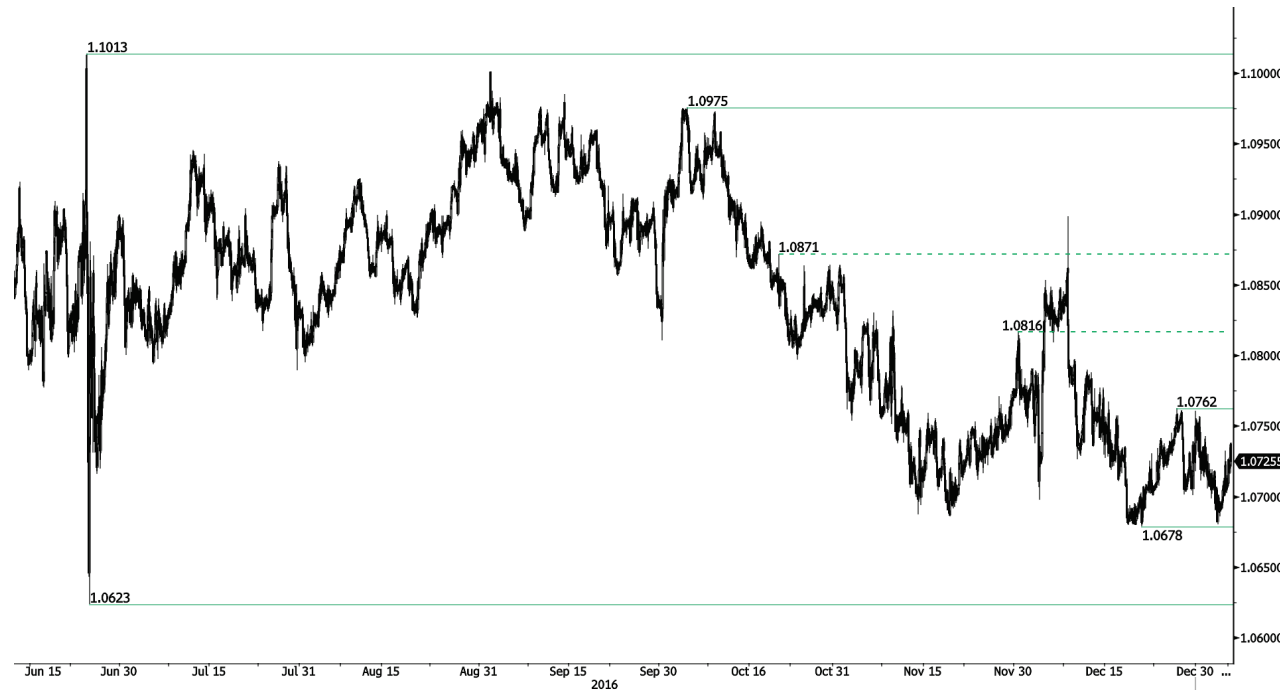


Bouncing higher from support at 0.7145.

- AUD/USD's buying pressures are still increasing around strong support given at at 0.7145 (24/05/2016 low). Further upside is likely towards resistance at 0.7313 (19/12/2016 high).
- In the long-term, we are waiting for further signs that the current downtrend is ending. Key supports stand at 0.6009 (31/10/2008 low) . A break of the key resistance at 0.8295 (15/01/2015 high) is needed to invalidate our long-term bearish view.

Yann Queenn | Market Strategist
 e-mail: yann.queenn@swissquote.ch

EUR / CHF



Moving sideways.

- EUR/CHF is moving sideways. Hourly resistance is given at 1.0762 (27/12/2016 high). Hourly support can be found at 1.0678 (21/12/2016 low). Expected to see continued bearish pressures towards key support that can be found at 1.0623 (24/06/2016 low).
- In the longer term, the technical structure remains positive. Resistance can be found at 1.1200 (04/02/2015 high). Yet, the ECB's QE programme is likely to cause persistent selling pressures on the euro, which should weigh on EUR/CHF. Supports can be found at 1.0184 (28/01/2015 low) and 1.0082 (27/01/2015 low).

Yann Quelell | Market Strategist
 e-mail: yann.quelell@swissquote.ch

EUR / JPY



Sideways price action.

- EUR/JPY is consolidating below resistance at 124.10 (15/12/2016 high). The pair is trading above former resistance at 122.01 (23/06/2016 high) and the road is wide-open for further increase. Expected to go way lower in case the pair breaks 122.00.
- In the longer term, the technical structure validates a medium-term succession of lower highs and lower lows. As a result, the resistance at 149.78 (08/12/2014 high) has likely marked the end of the rise that started in July 2012. Strong support at 94.12 (24/07/2012 low) looks nonetheless far away.

Yann Quelell | Market Strategist
e-mail: yann.quelell@swissquote.ch

EUR / GBP



Back towards 0.8600.

- EUR/GBP is back above former resistance given at 0.8572 (08/12/2016 high). Hourly support area is given from 0.8333 (former support 06/09/2016 low) and 0.8304 (05/12/2016 low). Expected to continued bullish momentum.
- In the long-term, the pair has largely recovered from recent lows in 2015. The technical structure suggests a growing upside momentum. The pair is trading far above from its 200 DMA. Strong resistance can be found at 0.9500 psychological level.

Yann Quelell | Market Strategist
 e-mail: yann.quelell@swissquote.ch

GOLD (in USD)

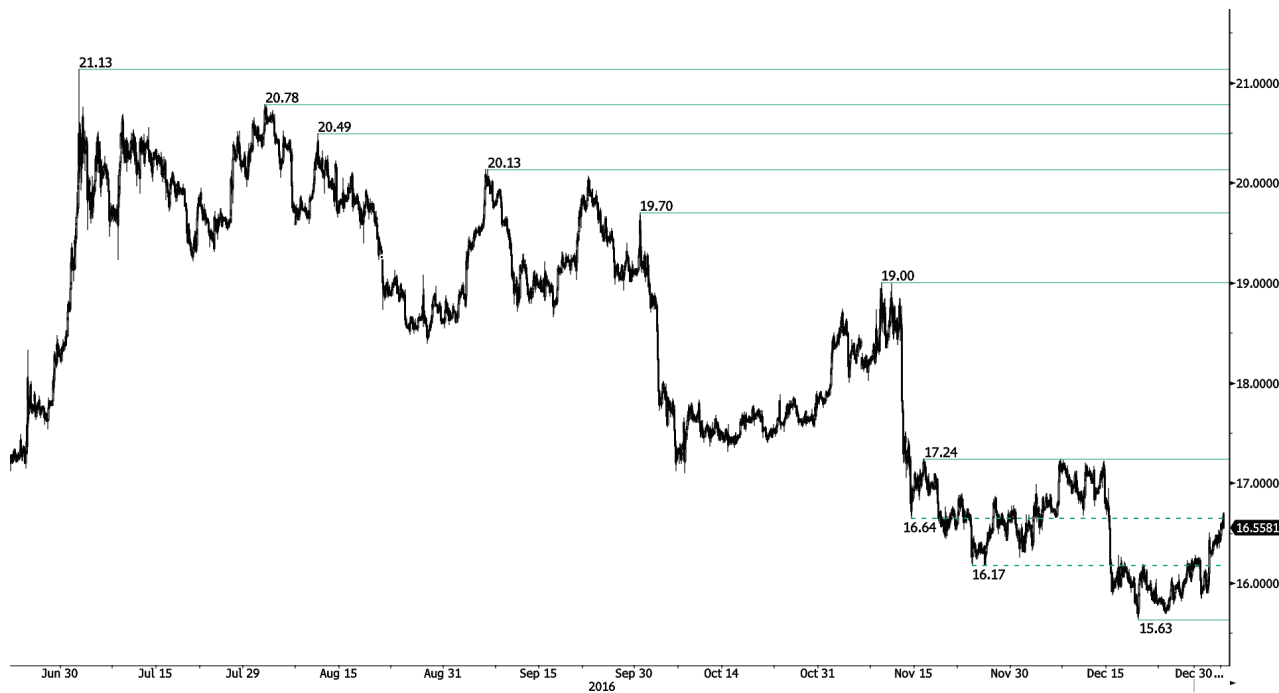


Gaining momentum.

- Gold remains weak but the metal is showing renewed bullish pressures. Support is located at 1122 (15/12/2016 low). Hourly resistance is given at 1188 (05/12/2016 high).
- In the long-term, the technical structure suggests that there is a growing upside momentum. A break of 1392 (17/03/2014) is necessary to confirm it. A major support can be found at 1045 (05/02/2010 low).

Yann Quelell | Market Strategist
 e-mail: yann.quelell@swissquote.ch

SILVER (in USD)



Pushing higher.

- Silver is trading higher. There is clearly a short-term bullish trend that initiated the 20th of December. Yet, bearish pressures may be important within resistance area between 16.50 and 17.00. Support can be found at 15.63 (20/12/2016).
- In the long-term, the death cross indicates that further downsides are very likely. Resistance is located at 25.11 (28/08/2013 high). Strong support can be found at 11.75 (20/04/2009).

Yann Queleonn | Market Strategist
 e-mail: yann.queleonn@swissquote.ch

Crude Oil (in USD)



Consolidating around \$52-\$53.

- Crude oil is now in a consolidation phase. Buying pressures seem important around \$52. Hourly resistance is given at 55.24 (03/01/2017 high). Expected to head even higher.
- In the long-term, crude oil has recovered after its sharp decline last year. However, we consider that further weakness are very likely. Strong support lies at 24.82 (13/11/2002) while can now be found at resistance at 51.93 (19/10/2015 high).

Yann Queleonn | Market Strategist
 e-mail: yann.queleonn@swissquote.ch

DISCLAIMER

While every effort has been made to ensure that the data quoted and used for the research behind this document is reliable, there is no guarantee that it is correct, and Swissquote Bank and its subsidiaries can accept no liability whatsoever in respect of any errors or omissions, or regarding the accuracy, completeness or reliability of the information contained herein. This document does not constitute a recommendation to sell and/or buy any financial products and is not to be considered as a solicitation and/or an offer to enter into any transaction. This document is a piece of economic research and is not intended to constitute investment advice, nor to solicit dealing in securities or in any other kind of investments.

Although every investment involves some degree of risk, the risk of loss trading off-exchange forex contracts can be substantial. Therefore if you are considering trading in this market, you should be aware of the risks associated with this product so you can make an informed decision prior to investing. The material presented here is not to be construed as trading advice or strategy. Swissquote Bank makes a strong effort to use reliable, expansive information, but we make no representation that it is accurate or complete. In addition, we have no obligation to notify you when opinions or data in this material change. Any prices stated in this report are for information purposes only and do not represent valuations for individual securities or other instruments.

This report is for distribution only under such circumstances as may be permitted by applicable law. Nothing in this report constitutes a representation that any investment strategy or recommendation contained herein is suitable or appropriate to a recipient's individual circumstances or otherwise constitutes a personal recommendation. It is published solely for information purposes, it does not constitute an advertisement and is not to be construed as a solicitation or an offer to buy or sell any securities or related financial instruments in any jurisdiction. No representation or warranty, either express or implied, is provided in relation to the accuracy, completeness or reliability of the information contained herein, except with respect to information concerning Swissquote Bank, its subsidiaries and affiliates, nor is it intended to be a complete statement or summary of the securities, markets or developments referred to in the report. Swissquote Bank does not undertake that investors will obtain profits, nor will it share with investors any investment profits nor accept any liability for any investment losses. Investments involve risks and investors should exercise prudence in making their investment decisions. The report should not be regarded by recipients as a substitute for the exercise of their own judgment. Any opinions expressed in this report are for information purpose only and are subject to change without notice and may differ or be contrary to opinions expressed by other business areas or groups of Swissquote Bank as a result of using different assumptions and criteria. Swissquote Bank shall not be bound or liable for any transaction, result, gain or loss, based on this report, in whole or in part.

Research will initiate, update and cease coverage solely at the discretion of Swissquote Bank Strategy Desk. The analysis contained herein is based on numerous assumptions. Different assumptions could result in materially different results. The analyst(s) responsible for the preparation of this report may interact with trading desk personnel, sales personnel and other constituencies for the purpose of gathering, synthesizing and interpreting market information. Swissquote Bank is under no obligation to update or keep current the information contained herein and not liable for any result, gain or loss, based on this information, in whole or in part.

Swissquote Bank specifically prohibits the redistribution of this material in whole or in part without the written permission of Swissquote Bank and Swissquote Bank accepts no liability whatsoever for the actions of third parties in this respect. © Swissquote Bank 2014. All rights reserved.